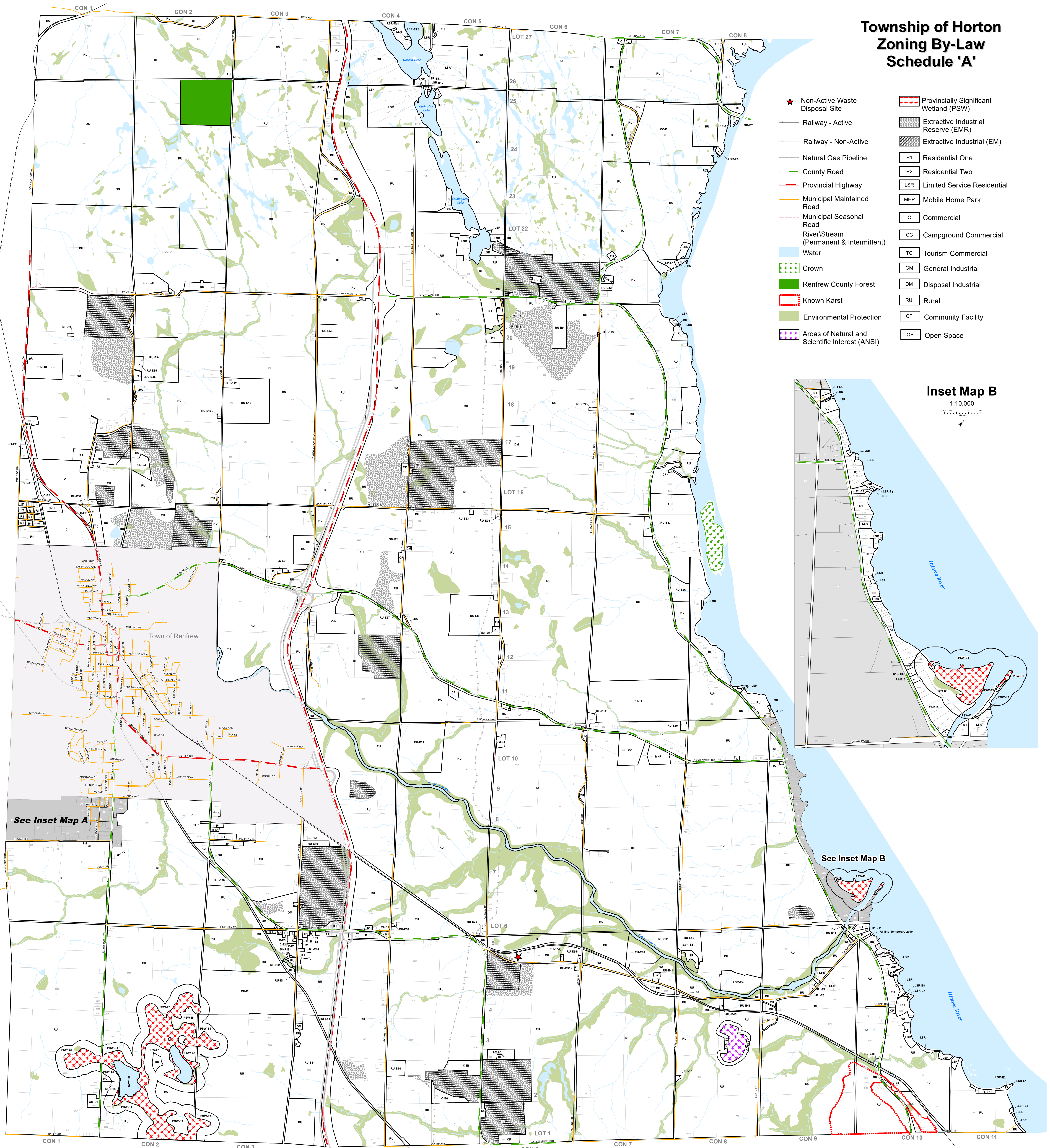
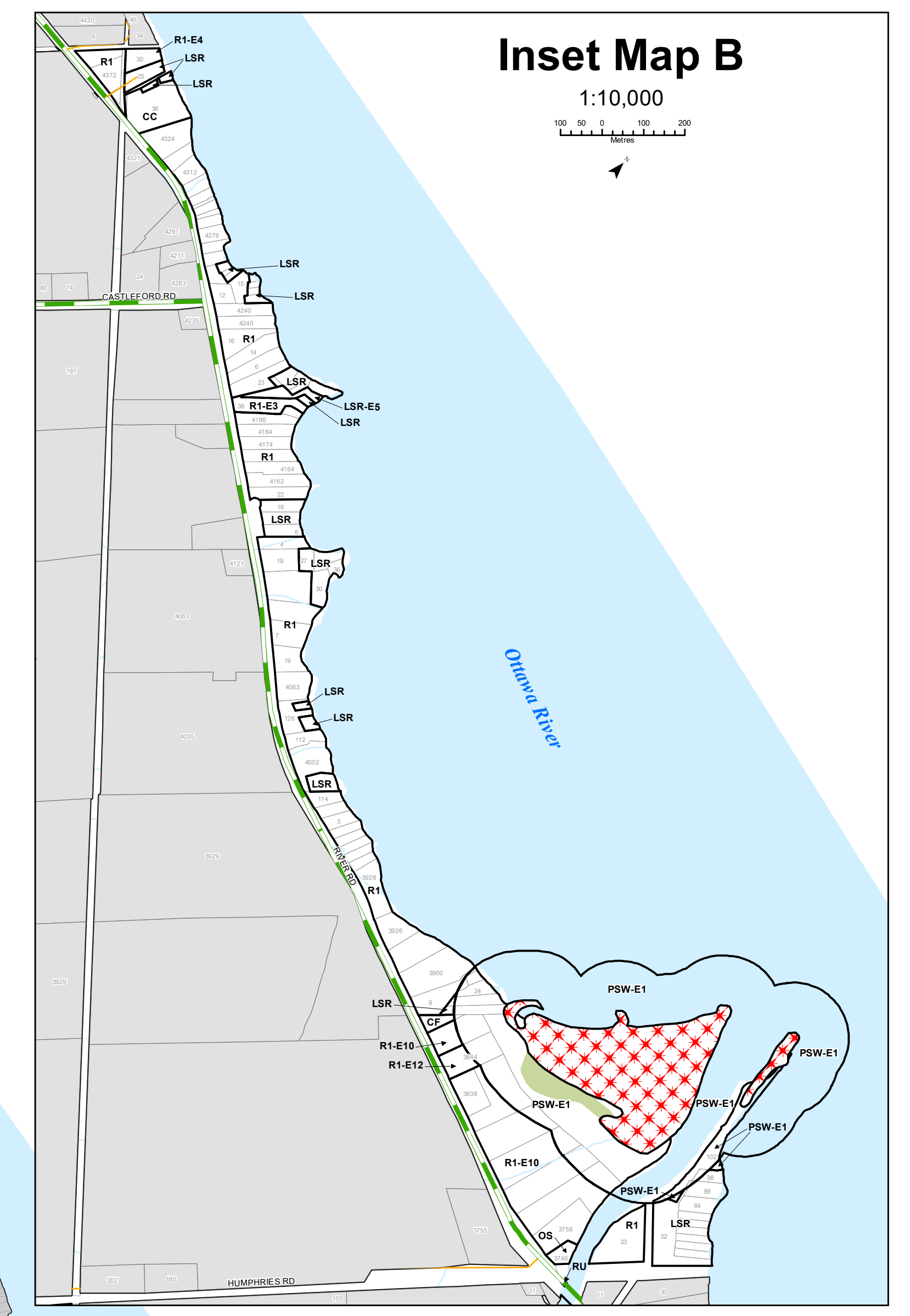


Township of Horton Zoning By-Law Schedule 'A'



- ★ Non-Active Waste Disposal Site
- Railway - Active
- Railway - Non-Active
- Natural Gas Pipeline
- County Road
- Provincial Highway
- Municipal Maintained Road
- Municipal Seasonal Road
- River/Stream (Permanent & Intermittent)
- Water
- Crown
- Renfrew County Forest
- Known Karst
- Environmental Protection
- Areas of Natural and Scientific Interest (ANSI)
- Provincially Significant Wetland (PSW)
- Extractive Industrial Reserve (EMR)
- Extractive Industrial (EM)
- R1 Residential One
- R2 Residential Two
- LSR Limited Service Residential
- MHP Mobile Home Park
- C Commercial
- CC Campground Commercial
- TC Tourism Commercial
- GM General Industrial
- DM Disposal Industrial
- RU Rural
- CF Community Facility
- OS Open Space

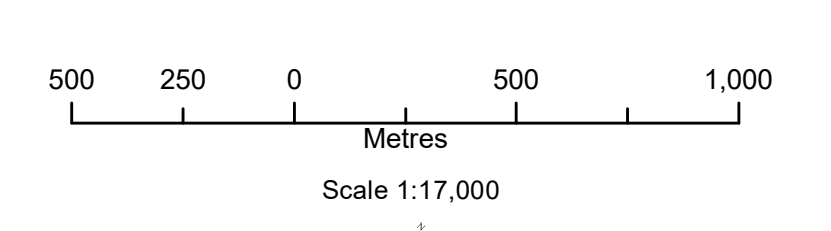


**Corporation of the
Township of Horton**

This is Schedule "A" to By-law Number 2010-14.
Passed the 4th day of MAY 2010.
Signatures of Signing Officers

Robert A Johnston Mayor
Frankie Juhn CAO/Clerk

Map Consolidation
January 12, 2021



Produced by:
County of Renfrew Development and Property Department
9 International Drive
Pembroke, Ontario K8A 6W5

Sources:
Base Data: OMNR & Renfrew County
Data Acquired on February 6th, 2008
Projection: UTM NAD83 Zone 18

May 2010

This map is illustrative only. Do not rely on it as being a precise indicator of routes, locations of features, nor as a guide to navigation.

© 2010, Queen's Printer for Ontario